

Kadoorie Farm & Botanic Garden

Plants

Visit Diary

Outdoor Learning Day

A Visit to the PLANT KINGDOM

This is the personal learning diary of:

Name:


Date of Visit:

Time of Visit:

Place Visited:



Things to note before setting off into the Plant Kingdom:

- 1 Do remember to act in an orderly manner.
- 2 Remember - Safety first.
- 3 Do arrive at the meeting point punctually (meet at the open space in the Reception area at _____am/pm).
- 4 Do not leave the visiting area without permission.
- 5 Do not damage anything in KFBG.
- 6 Do not touch any plants or animals in KFBG unless instructed by teachers or KFBG staff.
- 7 Do not shout, play or run in KFBG.
- 8 Sections marked with a house symbol “” should be completed at home.

Leaf ELVES

Dear students,

We are going to visit the Plant Kingdom, you will need 5 leaf elves to be your guides. Remember the unique features of these 5 leaf elves, and seek them in the forest. Gather them as they reveal themselves to you.



I have 2 colours.

I look like
your hand.



KFBG MAP



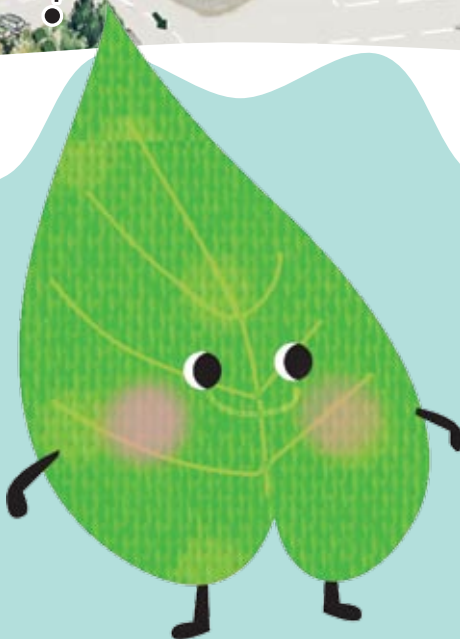
I have many holes.



I have a zig-zag edge.



I am larger than your hand.



Venue: Kwun Yum Garden

Renewable ENERGY

There is an energy crisis in the Plant Kingdom. Can you help? Look around the garden and try to find a way to help and conserve energy.



1 Can you see this instrument in the Kingdom? What do you think it is?

2 Suggested answers to this “purpose”. How do you think it works?

3 Can you think of an everyday item driven by the same mode of energy?



4 What are the advantages and limitations of this type of energy?

Advantages

Limitations



How do plants in the Kingdom make more plants?
To grow and flourish in the Plant Kingdom, different plants
use different methods to create new plants. Try to find 2 ways that
different plants use to disperse seeds around Kwun Yum Garden.



Venue: At the back of Kwun Yum Garden

Plant SEARCH

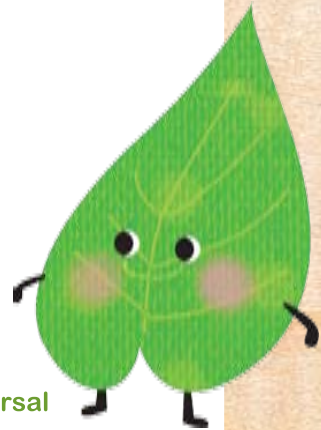
If you cannot identify
the plant, sketch its
features.

Name of Plant

Method of seed / spore dispersal

Name of Plant

Method of seed / spore dispersal



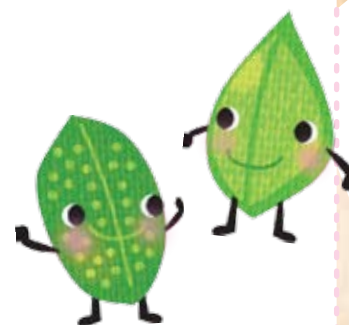
Visit Diary

Plant SEARCH

Venue: At the back of Kwun Yum Garden

Is there a plant that seems special and attracts you?
Why do you like it?

Draw its form and features in the space below:



Write down the features of one of these special plants that you have observed today:

Date of record _____

1 Is it a:

☐ Herb ☐ Tree ☐ Shrub ☐ Climber

2 Is it flowering?

☐ Yes ☐ No

3 Is it bearing fruit?

☐ Yes ☐ No

4 Colour _____

5 Form _____

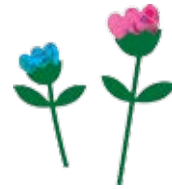
6 Other features _____

7 Why do I like this plant? _____

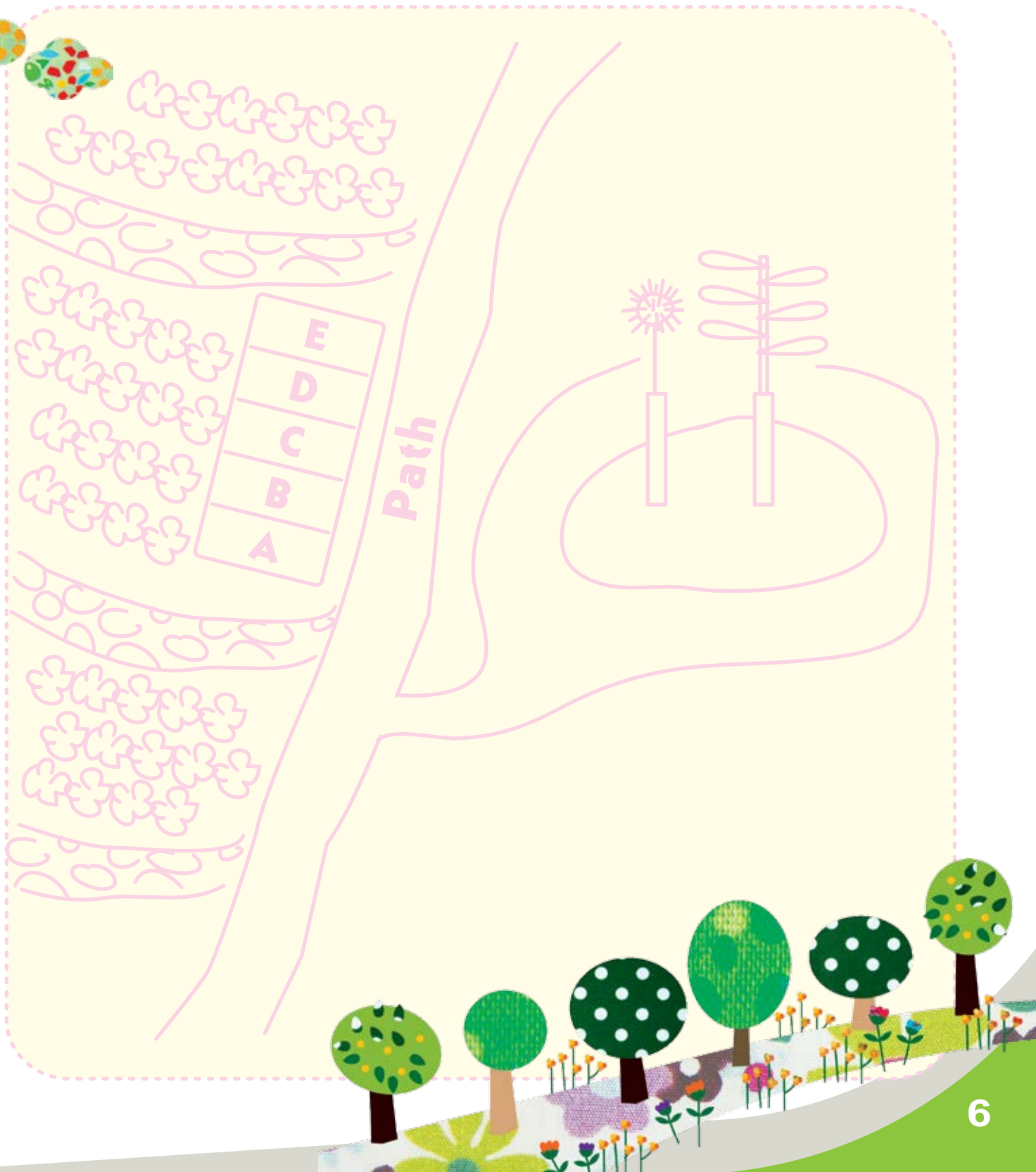


Venue: Eco-garden

Garden of LIFE

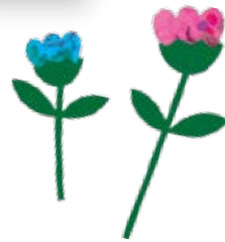


The Garden of Life in the Kingdom is often invaded by pests. What can we do to save the Garden? To save the Plant Kingdom, you must receive special training in pest control. Please draw or mark on this map the pest control measures used in the Eco-garden.



Visit Diary

Garden of LIFE



Venue: Eco-garden

What makes a plant healthy?

Organic fertilizer

Please write the names of five organic fertilizers in the pink boxes below, and match them with the appropriate description.

1

A

Made from peanut cake after extraction for oil. This fertilizer is rich in nitrogen. Suitable for leafy vegetables.

2

B

Raw ingredients are vegetable scraps, leaves and twigs. It is widely used in organic farming because it can improve soil texture and fertility.

3

C

Root nodules of leguminous plants which convert nitrogen into key nutrients (nitrate) that aid vegetable growth.

4

D

Ashes of burn leaves or twigs. The potassium within material aids effective movement of nutrients produced by photosynthesis to various parts of the plant. Suitable for plants with tubers.

5

E

Animal bones ground into powder form. It contains phosphates and has a long lasting effect on soil fertility. A fertiliser suitable for fruit trees, leguminous plants and root crops.

Let Me Think – Garden of Life

1

Which do you think is more effective, the methods shown by you on page 6 or using pesticides?



2

Would you choose to eat vegetables with or without holes bored by insects? Why?

3

Which method of applying fertilisers has less environmental impact?

4

What are the advantages and limitations of organic farming?

Venue: Eco-garden

Plant SNAPSHOTS

Many of the citizens of Plant Kingdom are dying after a previous crisis. What kind(s) of reproduction methods can we use to increase the population of the Plant Kingdom? (Any 3 methods)

1

2

3

Try to draw the steps of one of these reproduction methods below:



Name of this reproduction method:



Venue: Kwun Yum Garden

Champion TREE

The Plant Kingdom has a strong community with many types of plants. Let us now visit **the most senior citizen of the kingdom - Champion Tree**. Pick a tree that you think is the most attractive, then complete its "Info File".



Info File of

(Name of Tree)

Age

Country
of Origin

(If known)

Alien or Native ?



Tree height

M



Diameter at Breast Height

cm



"Heart beat" Can hear / Cannot hear



Pick up



Leaf



Flower



Fruit



Seed

Leaf Shape (Please circle the appropriate type)



Elliptical



Sickle



Hoof



Lobed



Palmate
Compound



Pinnate
Compound

Draw the Tree Form in this space

Write down the reasons(s)
why you like / chose this Tree?



Tree bark rubbing



Bark Colour



Almond



Light Brown



Dark Brown



Soil Red



Grey



Grayish White

Texture : **Smooth** or **Rough** ?

Has the bark got any pattern ?

Flowering : **Flowering** or **Not Flowering** ?

Petal Colour



Red



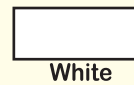
Orange



Yellow



Purple



White

Petal Size :

Stamen Colour



Red



Orange



Yellow



Purple



White

Stamen Size :



Fruiting : **Fruiting** or **Not Fruiting** ?

Fruit Type :

Any distinctive features :

Champion TREE

Types of Fruit



Berry Fleshy, juicy fruit with many tiny seeds.



Drupe Fruit is covered by a layer of hard endocarp. The outer layer is usually a fleshy mesocarp.



Pod Legume-shaped fruit that pops open to disperse seeds when ripe.



Cone Gymnospermae fruit carrying seeds. Every piece of hard scale contains winged seeds.



Capsule Dry fruit that breaks open to reveal many tiny seeds.



Pseudocarp A fruit developed in the ovary is usually called true fruit, while one that is developed from a receptacle is called a pseudocarp.

Common Trees of Hong Kong

Native Species

Chinese Banyan
Chinese Hackberry
Chekiang Machilus
Chinese Tallow Tree
Incense Tree
Ivy Tree
Lance-leaved Sterculia
Many-nerved Machilus
Schima
Sweet Gum

Naturalized Species

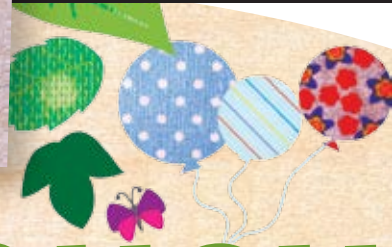
Camphor Tree
Tree Cotton
White Popinac



Exotic Species

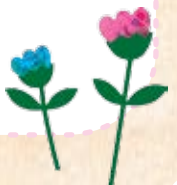
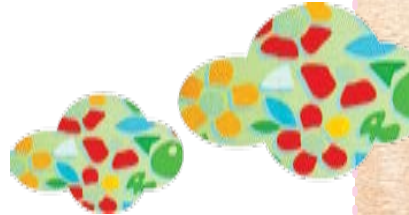
Brisbane Box
Camel's Foot Tree
Dwarf White Bauhinia
Flame Tree
Hong Kong Orchid Tree
Horsetail Tree
Paperbark Tree
Slash Pine
Sulphur Tree
Tasmanian Acacia
White Jade Orchid Tree





After THOUGHTS

After visiting the Plant Kingdom, please suggest some ways to protect the Earth. Can you put these methods into practice in your daily life? (Draw the shape of your palm in the box below and write your suggestions inside)



Write down your thoughts after the visit :



I saw

in

I felt

I heard

in

I felt

I smelt

in

I felt

I touched

in

I felt

I have learned that



Acknowledgements

We would like to thank Christian Alliance Toi Shan H.C. Chan Primary School, Sung Tak Wong Kin Sheung Memorial School and the Education Bureau School-based Curriculum Development (Primary) Section for providing comments and suggestions in the development of this plant visit diary.

Kadoorie Farm and Botanic Garden

✉ Lam Kam Road, Tai Po, New Territories, Hong Kong
☎ (852) 2483 7200 🌐 www.kfbg.org



SGS-COC-2113

© 1996 Forest Stewardship Council A.C.

Mixed Sources

Product group from recycled wood of fibre, well managed forests and other controlled sources.

www.fsc.org



This booklet is printed on Recycled Paper with Soya Offset Printing Ink